

LED RF WiFi Controller Touch Mono - 4 Zones User Manual



Controller: LC-012-011



Receiver: LC-012-004

1. Product Description

The RF wireless controller Mono is a touch panel with highly sensitive glass touch front. The controller can control 4 different zones. The glass touch panel, it is possible to switch the LED Mono light on, - and off and dimming via touch slider. Also it's possible, individually or together to save 3 different lighting scenes for all zones.

2. Specifications

2.1. Controller LC-002-011:

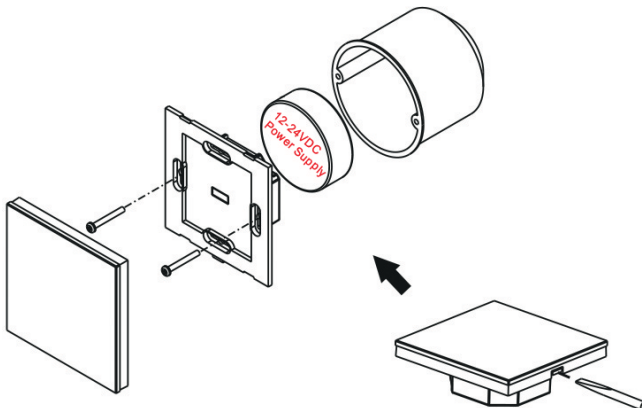
Operation Voltage: 12-24VDC, Frequency: 434MHZ/868 MHZ

2.2 Receiver LC-012-004:

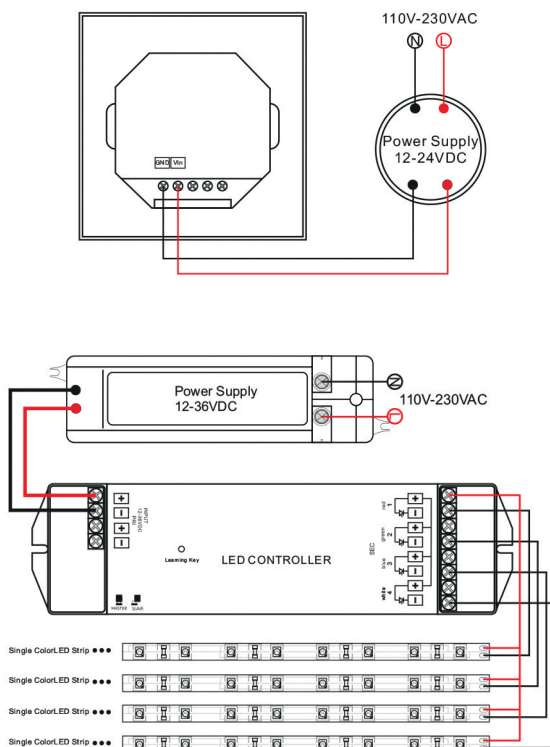
12-36VDC Input Power, 4 channels x 8A, constant voltage, 4 channels x (96-192)W

Important: With the Controller, the receiver LC-012-004 can be controlled. Thus, the receivers are controlled by software and controller.

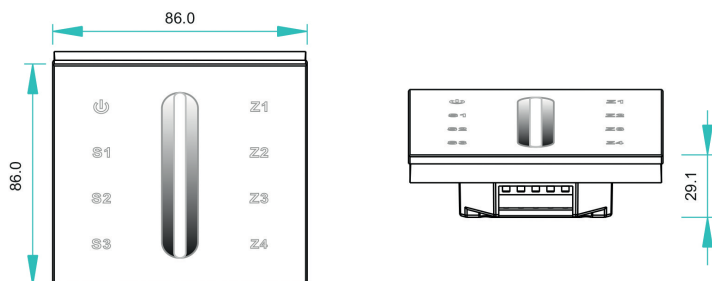
3. Installation



4. Wiring Diagram



5. Dimensions



6. Operation Manual

Connect as per point number 4. Wiring Diagram the touch panel and the controller to the power supply and the LED lights to the receiver. Connect then controller and receiver as follows:

Press and release the Learning Key-button on the receiver and then briefly press one of the zone buttons Z1-Z4. Then slide just above the rotary valve on the touch panel. If the LED light flashes once, you have the pairing successful completed.

Repeat the process with the other receivers, if you need them also. You can connect any number of receivers in the respective zone.

Press the zone button Z1-Z4 more than 2 seconds, the respective zone switch ON or OFF. The blue indicator light on the touch panel means the zone is switched ON, the yellow indicator light means that the zone is turned OFF.

Saving light scenes in different zones:

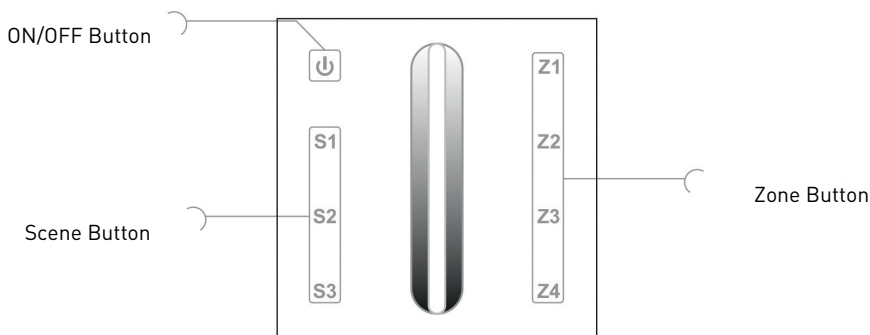
Adjust the required light effect with sliding over the rotary valve. Thereafter hold one of the three scene buttons (S1-S3) over 2 seconds. If the LED light flashes once, you have saved the scene successful.

Recall of the saved scene:

Briefly press the desired scene button (S1-S3), the stored light setting is recalled in the respective zone.

Memory (address) delete:

If you want to erase the memory of the receiver, hold the learning key-button for 10 seconds, while the receiver is powered up. Through the brief lighting of the LED's the deletion is confirmed. The receiver is thus reset to factory settings and thereby loses its addressing.



7. Safety warnings

1. To avoid installed the product in minefield, strong magnetic field and high voltage area.
2. To ensure the wiring is correct and firm avoiding short circuit damages to components and cause fire.
3. Please install the product in a well ventilated area to ensure appropriate temperature environment.
4. The product must be worked with DC constant voltage power supply.
Please check the consistence of input power with the product, if the output voltage of the power comply with that of the product.
5. Connect the wire with the power on is forbidden. Ensure proper wiring first then check to ensure no short-circuit, then power on.
6. Don't repair it by yourself whenever an error occur. Contact the supplier for any inquiry.