

LED DMX Controller Touch Dynamic White - User Manual



Item no: LC-007-032
(Successor model of LC-007-022)

1. Product Introduction

The controller is a touch panel and sends DMX signals to connect with DMX decoder. It has a highly sensitive glass touch panel with backlight with which Cold,- and Warmwhite can be adjusted. This controller is suitable for any LED Dynamic Flexstrip. Mounting on a standard 68mm flush-mounted socket.

2. Performance Parameter

Operation Voltage: 12V - 24V
Operation Frequency: DMX512 Signal
Dimensions: [lxwxh in mm]: 86 x 86 x 29,1 mm

3. Operations

 ON/Off Switch

When switched on, a blue LED is lit above the color wheel.

 Brightness

Here you can adjust the brightness of the desired color in 7 dimming stages up and down.

 Color Wheel

Use the color wheel to adjust the desired color or the color mix of cold and warm white. When the light color will be set, the brightness remains constant and the LED always lights up total to 100%. When cold white is set, it will light 100%, when warm white is set, it will light upto 100%. If neutral white is set 50% of warm white and 50% of cold white will light. The colors are requded by percentage, depending on the direction of the slider, but the overall color remains 100%. That means for example cold white 70% and warm white 30%.

DMX addresses:

The DMX controller has 2 DMX addresses. Thus address 1 corresponds to color warm white, address 2 color are cold white.

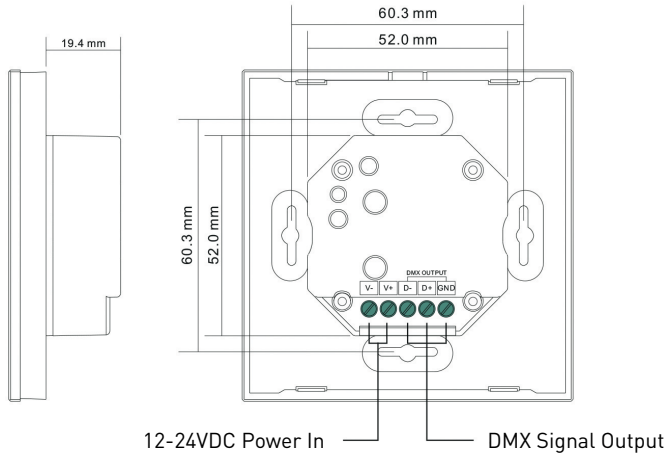
S1 S2 S3 S4 Save 4 different colors

These buttons can be used to save and recall mixed colors.

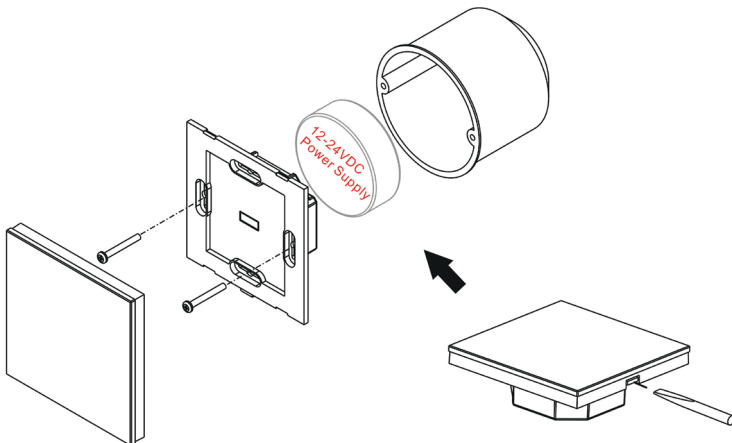
To save a color, proceed as follows:

First select a color, then press a number for 3 seconds until the connected light lights up, your color has now been saved. To call up the stored color, press the previously dialed number shortly.

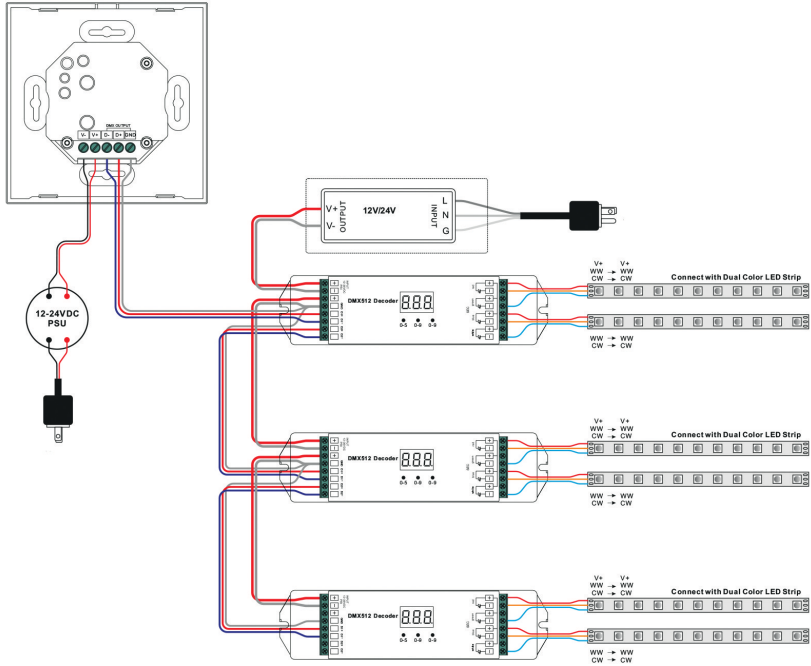
4. Dimensions and Connection



5. Installation



6. Conjunction Diagram



7. Safety Warning

- 6.1. To avoid installed the product in minefield, strong magnetic field and high voltage area.
- 6.2. To ensure the wiring is correct and firm avoiding short circuit damages to components and cause fire.
- 6.3. Please install the product in a well ventilated area to ensure appropriate temperature environment.
- 6.4. The product must be worked with DC constant voltage power supply.
Please check the consistence of input power with the product, if the output voltage of the power comply with that of the product.
- 6.5. Connect the wire with the power on is forbidden. Ensure proper wiring first then check to ensure no short-circuit, then power on.
- 6.6. Don't repair it by yourself whenever an error occur. Contact the supplier for any inquiry.

This guide is only valid for this model. Further updates are subject to change.