

LED DMX Controller Stick GU2 - User Manual



Item no.: white: LC-007-002



Item No.: black: LC-007-102

1. Product Description

The stick GU 2 Controller is a LED controller with touch panel glass and sends DMX Signals and can control up to 128 DMX channels.

The controller with which on / off, color selection, brightness and selection can be set of predefined or self-defined lighting scenes for ease of control 3 touch sensitive buttons. The controller is suitable for any RGBW LED light. Assembling onto a customary 68mm flush box.

2. Performance Parameter

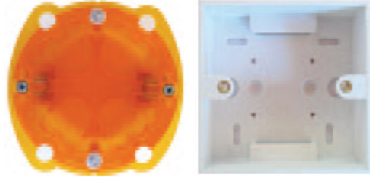
Supply Voltage	5,5-12V / max 5W
Output Signal	DMX512
Product Dimensions (L x W x H in mm)	L 86 x W 86 x H 10 mm
Weight	130 g

3. Basic Features

1. DMX Stand Alone Controller (128 channels) with a glass face
2. Three touch sensitive buttons (on/off mode, previous, next)
3. Up to 24 dynamic or static scenes (8 first visualized by a led)
4. Compatible with any DMX fixture or DMX LED driver
5. Live setting of the intensity and color of a scene
6. Programmable through the included USB cable and control software
7. Ready to use (pre-loaded with 8 scenes and 42 RGB fixtures)
8. mounting on a customary 68 mm flush box
9. System Requirement: Mac OSx 10.6/10.7/10.8 - Windows XP/VISTA/7/8 32/64 bits and USB 2.0

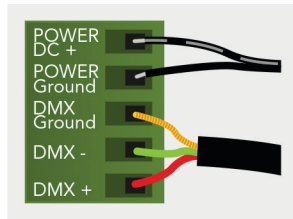
4. Installation

1. Mount an electrical box inside th wall
The S.T.I.C.K. controller can be installed in a standard 68mm electrical box. You can insert the AC/DC adapter inside or outside the backbox.



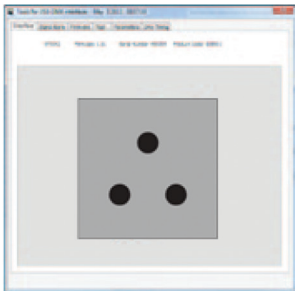
2. Connect the wires

Pls use the green connector block
POWER+DMX with the connector block
DMX: Connect the DMX cable to the lighting receivers (LED's, Dimmers, Fixtures,...) (for XLR: 1=ground 2=dmx- 3=dmx+)
POWER: Connect the AC/DC adapter. Make sure not to invert the + and the gorund.

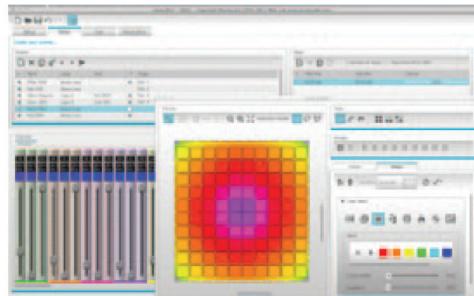


3. Mount the interface on the wall
First, plug the green connector block
Secondly, mount the back side of the interface on the wall with 2 or more screws
Then, close the unit by clipping the front panel onto the back plate
Wait 30 seconds for the touch sensitivity to adjust

4. Software

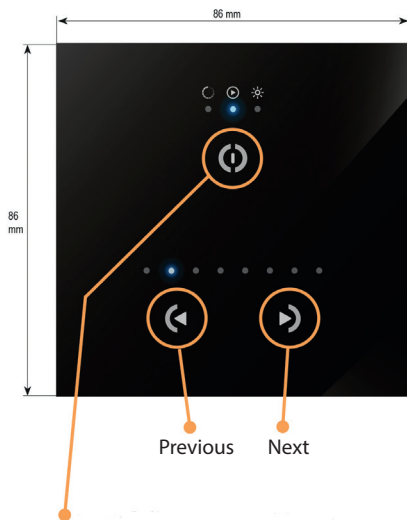
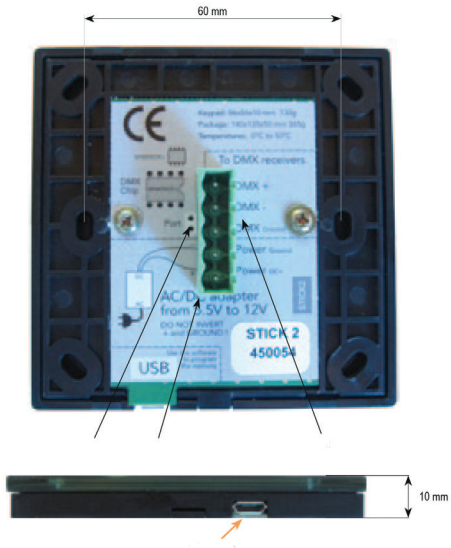


TOOLS.EXE to set parameters



ESA2 (PC & Mac) to make lighting programs

5. Dimensions/Connection



ON/OFF: Short Touch - Easy switch on and off
Change Mode: Touch and hold to swith between color,
scene and dimmer mode

6. Safety warnings

- 6.1. To avoid installed the product in minefield, strong magnetic field and high voltage area.
- 6.2. To ensure the wiring is correct and firm avoiding short circuit damages to components and cause fire.
- 6.3. Please install the product in a well ventilated area to ensure appropriate temperature environment.
- 6.4. The product must be worked with DC constant voltage power supply.
Please check the consistence of input power with the product, if the output voltage of the power comply with that of the product.
- 6.5. Connect the wire with the power on is forbidden. Ensure proper wiring first then check to ensure no short-circuit, then power on.
- 6.6. Don't repair it by yourself whenever an error occur. Contact the supplier for any inquiry.