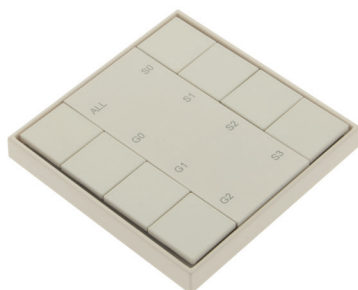


LED DALI Button Dimmer Mono 4 Zones (Groups) - Manual



Article No.: LC-004-940



Article No.: LC-004-941

1. Product description

The DALI push-button dimmer is a control unit that sends DALI commands to control DALI Operating Devices. It has 4 group buttons on the left and 4 scene buttons on the right. Various label fields can be attached in the centre, which make the push-button dimmer easier to operate and are permanently backlit for better visibility at night. This push-button dimmer can be used to control up to 4 DALI groups and up to 4 DALI scenes. If the number of push-button dimmers is increased to 4 per DALI bus, it is possible to control up to 15 DALI groups and one broadcast (BC) as well as up to 16 DALI scenes. Easy installation using a mounting frame is possible in a standard 68 mm flush-mounted box. As the touch dimmer does not have an internal bus supply, it must be supplied via an external DALI bus supply.

2. Product parameters

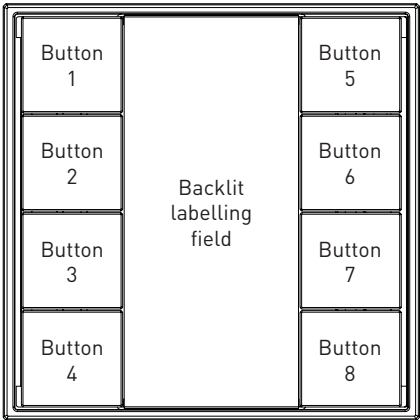
Supply voltage:	via DALI bus
Output:	DALI signal
Operating current:	30mA
Operating temperature:	0-40°C
Humidity:	8% - 80%
Dimensions:	86 x 86 x 26.6 mm
Protection class:	IP20

3. Dimensions, connection and operation

Buttons 1-4
Group buttons

Short press
Switch on and off

Long press
Dim up and down

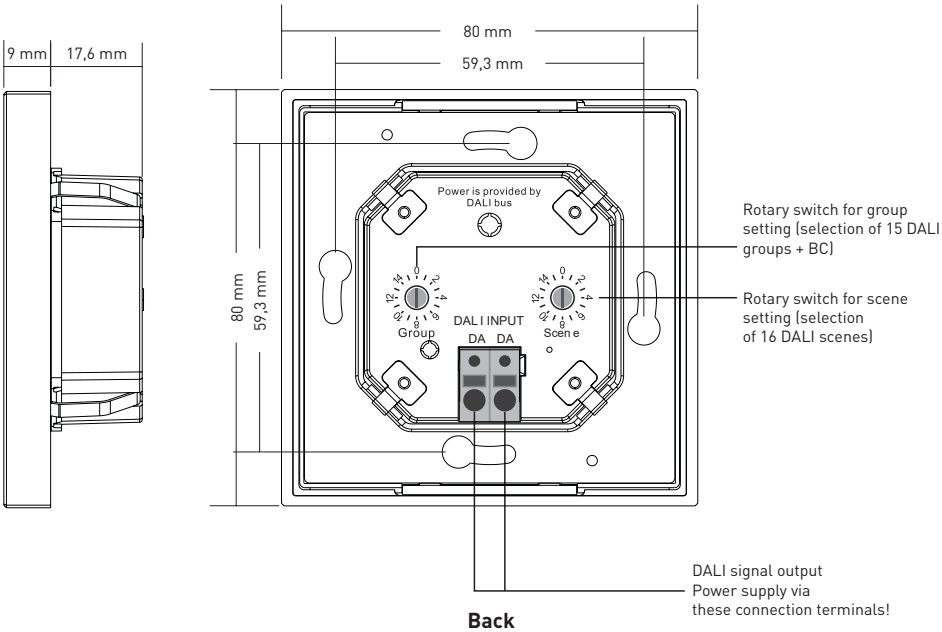


Buttons 5-8
Scene buttons

Short press
Scene recall

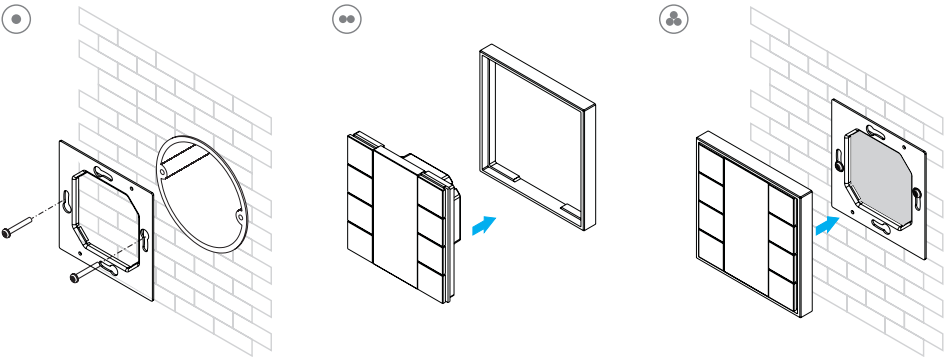
Long press
> 2 seconds
Scene save

Front



Back

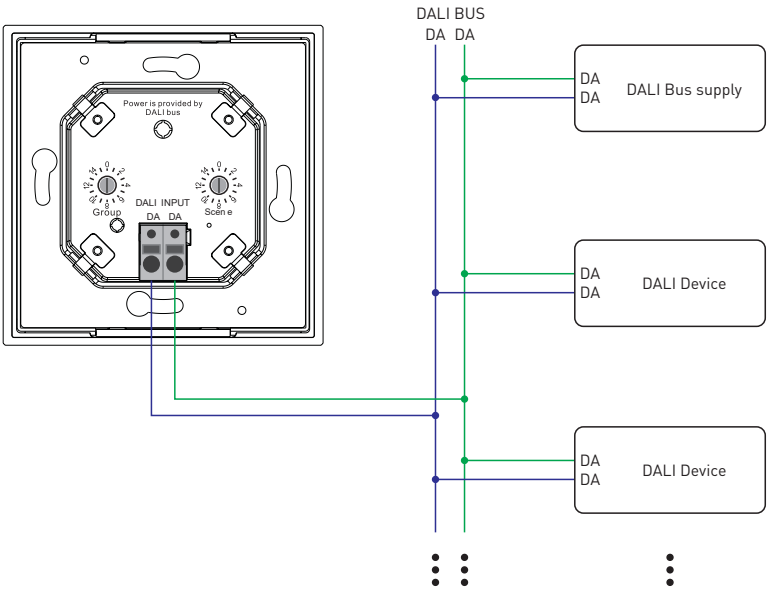
4. Installation



Safety warnings

- Never install the product while it is live.
- Do not expose the product to excessive moisture.

5. Connection diagram



6. Instructions

1. Connect the touch dimmer as described.
2. Use the group switch and scene switch on the rear panel to set the desired DALI groups that you would like to control via the panel, as well as the desired scenes that the panel should use. The assignment of the groups and scenes can be found in the following tables.

Group switch setting on the rear of the panel

Rotary switch Position	0	1	2	3	4	5	6	7	8	9	10	11	12	13	14	15
DALI Group Button 1	BC	0	1	2	3	4	5	6	7	8	9	10	11	12	13	14
DALI Group Button 2	0	1	2	3	4	5	6	7	8	9	10	11	12	13	14	BC
DALI Group Button 3	1	2	3	4	5	6	7	8	9	10	11	12	13	14	BC	0
DALI Group Button 4	2	3	4	5	6	7	8	9	10	11	12	13	14	BC	0	1

Scene switch setting on the rear of the panel

Rotary switch Position	0	1	2	3	4	5	6	7	8	9	10	11	12	13	14	15
DALI Scene Button 5	0	1	2	3	4	5	6	7	8	9	10	11	12	13	14	15
DALI Scene Button 6	1	2	3	4	5	6	7	8	9	10	11	12	13	14	15	0
DALI Scene Button 7	2	3	4	5	6	7	8	9	10	11	12	13	14	15	0	1
DALI Scene Button 8	3	4	5	6	7	8	9	10	11	12	13	14	15	0	1	2

The touch dimmer comes with 5 different covers that you can place on the touch dimmer to make it easier to operate.

A blank cover is included if you do not want the pre-printed templates!

Usually, the cover intended for group switch setting 0 and scene switch setting 0 is used.

You can use the button 1 at the top left (see illustration on page 2) to control the DALI actuators broadcast (ALL).

Broadcast means that all DALI devices that are connected to the DALI bus, even if they have not yet been assigned to a DALI group, are controlled.

Use button 2 to control DALI group 0 (G0), button 3 to control DALI group 1 (G1) and button 4 to control DALI group 2 (G2).

With scene switch setting 0, scenes 0 (S0), 1 (S1), 2 (S2) and 3 (S3) are used. These are operated using the right-hand buttons 5 to 8.

There is also a cover for DALI groups 3 - 6 and for DALI scenes 4 - 7, for which the group switch and scene switch must be set to No. 4. A cover for DALI groups 7 - 10 and for DALI scenes 8 - 11, where the group switch and scene switch must be set to No. 8. A cover for DALI groups 11 - 14 and DALI scenes 12 - 15, where you have to set the group switch and scene switch to No. 12.

This means that you can use the touch dimmer to control up to 15 different DALI groups and broadcasts as well as all 16 DALI scenes.

By briefly pressing the left buttons 1 - 4, you can switch the respective DALI group on and off, and by pressing and holding, you can dim the respective groups up and down. If you press and hold the button and the light dims down, pressing and holding the button again will dim the light up.

The scenes are controlled using the right-hand buttons 5 - 8. A short press of the button calls up the scene and a long press (>2 seconds) saves the scene. To save a scene, first set the DALI groups to the desired value by switching them on and off or by dimming them up and down. Then press and hold the scene button with which you want to save the desired scene for at least 2 seconds. This saves the settings in the DALI actuators. Saving is also indicated visually by the light sources connected to the DALI actuators flashing.

When saving and calling up the scene, the scene values are always sent via broadcast. This means that with this panel, you can always call up all participants in a scene or save scene values in all devices. This gives you the option of using 16 scenes when using 4 different panels and operating 15 DALI groups + broadcast (BC). However, this also means that luminaires assigned to DALI groups other than those that can be operated directly on the panel are also called up using the mood buttons. Therefore, when dimensioning or designing the DALI bus line, it is important to ensure that only those devices that you want to control via the panel are connected to the DALI line.

It should also be noted that a panel has a power consumption of up to 30mA and that the DALI bus supply must be dimensioned accordingly if several panels are connected to a DALI bus! In other words, if you use 4 panels in a system, you need a supply of 120mA for the 4 touch dimmers alone.

7. Security warnings

- 7.1. This dimmer must not be installed in strong magnetic fields or high-voltage fields.
- 7.2. To prevent damage to the dimmer and fire caused by short circuits, connect the device according to the instructions.
- 7.3. Please always install the dimmer in a well-ventilated location to prevent overheating.
- 7.4. Check that the supply voltage (DALI bus voltage) is correct.
- 7.5. Do not connect any cables that are live. Check that you have connected everything correctly to avoid short circuits or other sources of error when switching on.
- 7.6. Please do not open the cover to carry out repairs on the dimmer yourself.

These instructions are only valid for this model. Further updates are subject to change.